

AIR/TAIK

Compressed Air System Products

Compressed Air System Filters



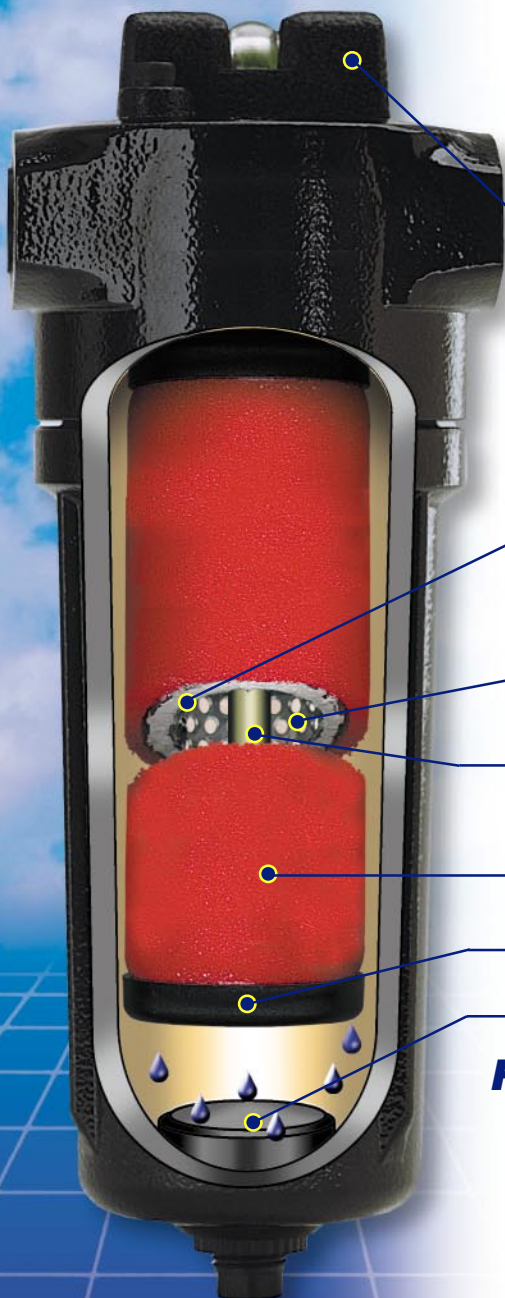
Compressed Air System Products

That Save Energy & Improve Operations



Compressed Air System Products

Compressed Air System Filters



Air/Tak Filters for Clean, Dry Compressed Air Systems

**Differential
Pressure Indicator**

**Multiple Borosilicate Glass
Microfiber Layers**

**Inner and Outer 304 Stainless
Steel Support Cores**

Aluminum Tie Rod System

**Outer Specially
Impregnated Open Cell Foam**

Corrosion-Resistant End Cap

Automatic Drain Valve

F03 - F40 Material of Construction/Features

- Aluminum Cast Filter Housing (ANSI Alloys A380 and A413)
- Filter Housing Finish: Powder Coated Exterior (ASTM & ISO) and Anticorrosive Wash Fuller Interior
- Filter Element Media: Borosilicate Glass Microfibers
- Filter Element Construction: Corrosion Resistant Glass Polyamide End Cap, Inner and Outer 304 Stainless Steel Support Cores and Outer Foam Drain Layer
- Differential Pressure Indicators or Gauges on Housings
- Automatic Drain Valves

Models F03 through F40

Compressed Air Filter Media Specifications

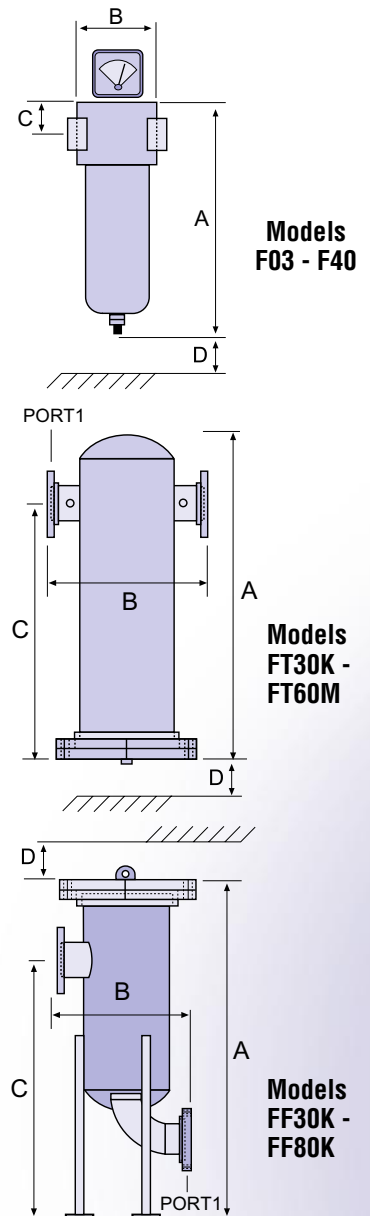
Element Grade	Particle Removal	Maximum Oil Carryover (mg/m ³)	Micron Rating Pressure Drop (PSID)	Applications
C	.01μ	.01	1 1/2	Coalescing to remove smaller aerosols. Prefilter for Regenerative Air Dryers or second filter in 2-stage coalescing.
GP	1μ	.5	1 1/4	General purpose filtration to remove heavy aerosol loads. Prefilter for Deliquescent and Refrigerated Air Dryers or first filter in 2-stage coalescing.
PF	5μ	5	3/4	Prefilter for Coalescer.
P	1μ	N/A	1 1/4	Particulate interception. Afterfilter for Desiccant Air Dryers.
A	99% Oil Vapor Removal	.003	1 1/4	Carbon absorber for removal of oil vapors. Preparation for breathing air.
HT	1μ	N/A	1 1/4	High temperature particulate interception. Afterfilter for Heated Regenerative Air Dryers.

Rated Capacity

Dimensions

Filter Housing Model No.	Flow Rate (SCFM @ 100 PSIG)	Inlet & Outlet Conn.	Height A	Width B	To Port C	Bowl Clearance D	Weight (lb.)
F03-**30	30	3/8"	7 5/8"	2 5/8"	3/4"	4"	2
F04-**60	60	1/2"	9 1/3"	3 3/4"	3/4"	6"	3
F06-**120	120	3/4"	14 3/4"	4 5/8"	1 1/3"	10"	4
F10-**150	150	1"	18 1/3"	4 5/8"	1 1/3"	12"	5
F12-**300	300	1 1/4"	20 7/8"	4 5/8"	1 1/3"	15"	10
F14-**350	350	1 1/2"	20 7/8"	4 5/8"	1 1/3"	17"	14
F20-**700	700	2"	28 7/16"	6 11/16"	2 1/2"	22"	18
F24-**900	900	2 1/2"	29 15/16"	9 1/4"	2 5/6"	17"	24
F30-**1300	1300	3"	29 15/16"	9 1/4"	2 5/6"	24"	36
F40-**2000	2000	4"	33 1/8"	14 3/16"	4 15/16"	26"	48
FT30K-**	1500	3"	45 1/8"	17 1/4"	36 1/2"	30"	175
FF30K-**	1500	3"	53 1/8"	15 1/16"	40 3/8"	30"	195
FT40L-**	2000	4"	44 3/8"	21 3/4"	34 7/8"	27"	300
FF40L-**	2000	4"	51 1/4"	20 7/16"	37 3/8"	27"	320
FT60M-**	3000	6"	56 1/4"	24 3/4"	45 3/4"	38"	350
FF60M-**	3000	6"	62 1/8"	23 1/8"	48 3/4"	38"	390
FF60K-**	4500	6"	83"	29"	63 9/16"	30"	420
FF80K-**	6000	8"	81"	31 1/8"	60 5/16"	30"	680

** Indicate filter element grade (C, GP, PF, P, A, HT), Connections: F03-F40: NPT, F*30 - F*80: Flanged
 Maximum Working Pressure: F03 - F40: 250 PSIG, F*: 150 PSIG. Maximum Working Temperature: 175°F.
 FT and FF Filter Housings are ASME Coded Carbon Steel Vessels.
 Dimensions and weights subject to change without notice.



Recommended Filters for Compressed Air Dryers

Filter Housing Model No. ¹	Refrigerated		Heatless Regenerative		Heated Regenerative		Deliquescent	
	Filter Element Grade							
	Prefilter (GP)	Afterfilter (C)	Prefilter (C)	Afterfilter (P)	Prefilter (C)	Afterfilter (HT)	Prefilter (GP)	Afterfilter (P)
F03-**30	SD-10/20		SHLD-10		—		—	
F04-**60	SD-20/30		SHLD-25/50 HLD-25/35/50		—		DD-48	
F06-**120	SD-40/50/75		HLD-70/100		—		DD-72	
F10-**150	SD-100/150		HLD-100/150		EHD-100		DD-100/150	
F12-**300	SD-200/250		HLD-200		EHD-175/250 BPD-250		DD-150/220	
F14-**350	SD-200/250 D-320		HLD-250/350		EHD/BPD-350		DD-370	
F20-**700	D-400/500/600		HLD-500/650		EHD/BPD-500/700		DD-370/520	
F24-**900	D-800		HLD-800		EHD/BPD-850		DD-740	
F30-**1300	D-1000		HLD-1000/1250		EHD/BPD-1000/1350		DD-970/1250	
F40-**2000	D-1250 to 2000		HLD-1500/2000		EHD/BPD-1700/2100		DD-1500/1750	
FT30K-**1500	D-1250/1500		HLD-1000 to 1500		EHD/BPD-1350		DD-1250/1500	
FF30K-**1500	D-1250/1500		HLD-1000 to 1500		EHD/BPD-1350		DD-1250/1500	
FT40L-**2000	D-1750/2000		HLD-2000		EHD/BPD-1700/2100		DD-1750/2000	
FF40L-**2000	D-1750/2000		HLD-2000		EHD/BPD-1700/2100		DD-1750/2000	
FT60M-**3000	D-2200/2500		HLD-2500/3000		EHD/BPD-2400/3100		DD-2500/3000	
FF60M-**3000	D-2200/2500		HLD-2500/3000		EHD/BPD-2400/3100		DD-2500/3000	
FT60K-**4500	D-3200/4000		HLD-3500/4500		EHD/BPD-3800/4300		DD-4000	
FF80K-**6000	D-5000/6250		HLD-5500/6250		EHD/BPD-5000/6250		DD-5000	

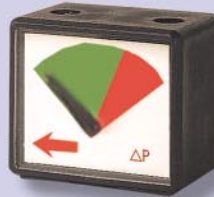
1 Differential Pressure Indicators or Gauges and Automatic Drain Valves Installed on All F03 - F40 Filter Housings

Compressed Air System Filter Accessories



Differential Pressure Indicator

Model DPI-10
Installed on Filter Models F03 and F04



Differential Pressure Gauge

Model DPG-10
Installed on Filter Models F06 through F40



Manual Drain

Model MD-10
Installed on High Pressure Filters



Automatic Drain Valve

Model ADV-10
Installed on Filter Models F03 through F40



Filter Solenoid Drain Valve

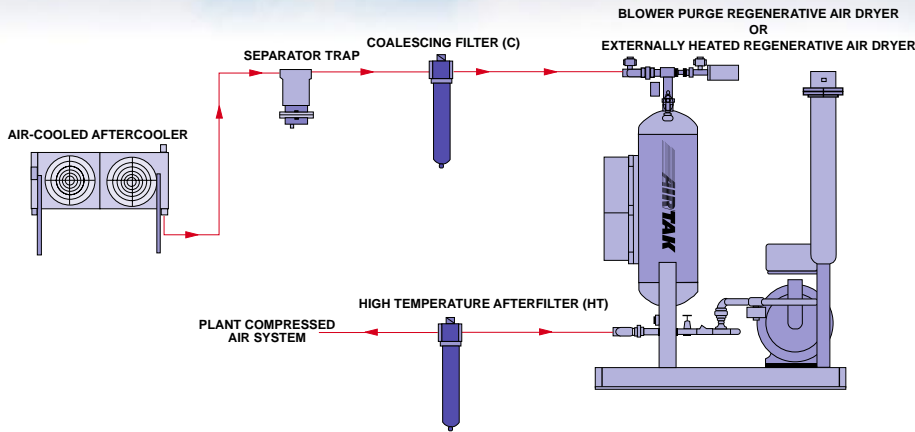
Model FSDV-01
Optional on F Series Filters



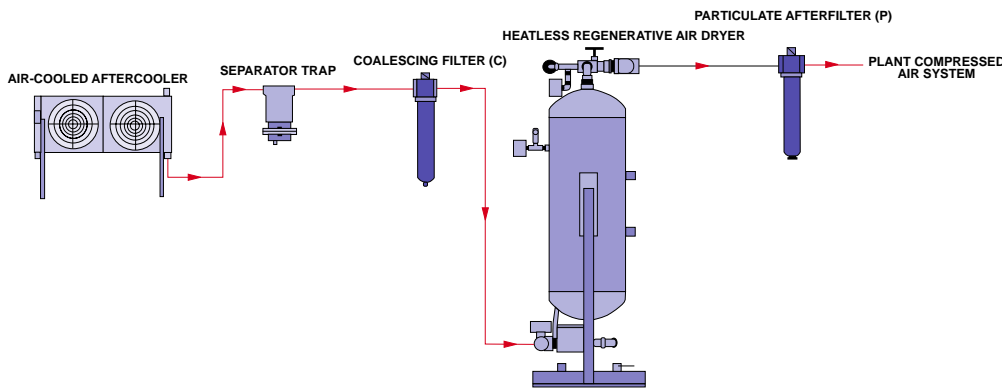
Zero Loss Drain

Model ZLD-04
Optional on F, FT and FF Series Filters

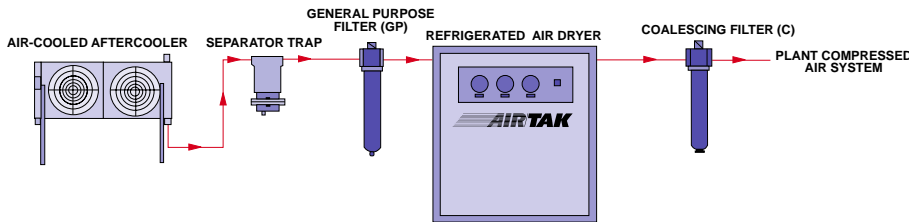
ISO 8573.1 Quality Classes and System Applications



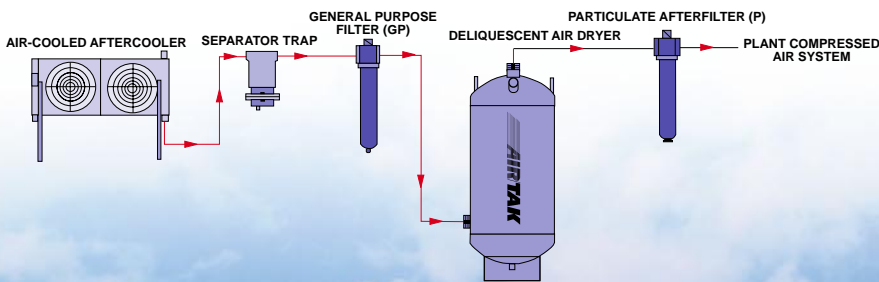
Solid: 1
 Water: 2
 Oil: 1
System Applications:
 Injection Molding, CNC,
 Electronics, Instrumentation



Solid: 1
 Water: 2
 Oil: 1
System Applications:
 Injection Molding, CNC,
 Electronics, Instrumentation



Solid: 1
 Water: 4
 Oil: 1
System Applications:
 Automated Equipment,
 Air Motors and Tools,
 Cylinders, Valves



Solid: 2
 Water: -
 Oil: 3
System Applications:
 General Pneumatic Systems,
 Remote Outdoor Installations

ISO 8573.1 Quality Classes

Quality Class	Solid Contaminants Maximum Particle Size in μ	Water Pressure Dew Point @ 100 PSIG (7 bar)	Oil Content PPM (mg/m ³)
1	0.1	-94°F (-70°C)	0.008 (.01)
2	1	-40°F (-40°C)	0.08 (0.1)
3	5	-4°F (-20°C)	0.8 (1.0)
4	15	37°F (3°C)	4 (5)
5	40	45°F (7°C)	21 (25)
6	-	50°F (10°C)	-

High Pressure Filters



- Corrosion Resistant Electrostatic Powder Exterior and Epoxy Interior
- Heavy Wall Carbon Steel Housing
- Borosilicate Glass Microfiber Element
- Tie Rod System
- Manual Drain Valve

Rated Capacity		Dimensions			
Model No.	Flow Rate (SCFM @ 3000 PSIG)	Inlet & Outlet Conn.	Height	Width	Weight (lb.)
HPF02-**60	60	1/4"	6 1/8"	3 15/16"	8 1/2
HPF04-**175	175	1/2"	6 7/8"	3 15/16"	9
HPF06-**350	350	3/4"	8 1/8"	3 15/16"	10
HPF10-**500	500	1"	9 15/16"	4 15/16"	25 1/2
HPF10-**700	700	1"	14 3/4"	4 15/16"	29

* Indicates filter element grade (C, GP, PF, A)
Maximum Working Pressure: 3000 PSIG, Maximum Temperature: 175°F
Dimensions and weights subject to change without notice.

Other Air/Tak Compressed Air System Products

Refrigerated Air Dryers:



These dryers provide a 38°F outlet pressure dew point. Models that are rated for air flows of 10 to 15,000 SCFM are available with air or water-cooled condensing units.

Heatless Regenerative Air Dryers:



Small Heatless Regenerative Air Dryer line with 10, 25 and 50 SCFM models. Standard Heatless Regenerative Air Dryers are available in capacities from 25 to 10,000 SCFM.

Heated Regenerative Air Dryers:

Externally Heated and Blower Purge Regenerative Air Dryers are available in capacities from 100 to 10,000 SCFM.



Compressed Air Pressure Control Systems:

These systems that help minimize "artificial demand" are available in five models covering a wide range of flow rates.



AIR TAK

Compressed Air System Products

Compressed Air System Products That Save Energy & Improve Operations

F: 4/2001